

## Connecting to Eduroam via Windows 7

The following instructions are intended for users who wish to connect to the eduroam wireless network using Microsoft Windows 7.

### Instructions

1. Click on the **[Start]** menu and navigate to **[Control Panel]** followed by **[Network and Internet]**
2. Select **[Network and Sharing Center]** and then from the left hand menu select the **[Manage Wireless Networks]** option. You will be presented with the following window (Figure 1).
3. Click the **[Add]** button and select **[Manually create a network profile]** as in (Figure 2).

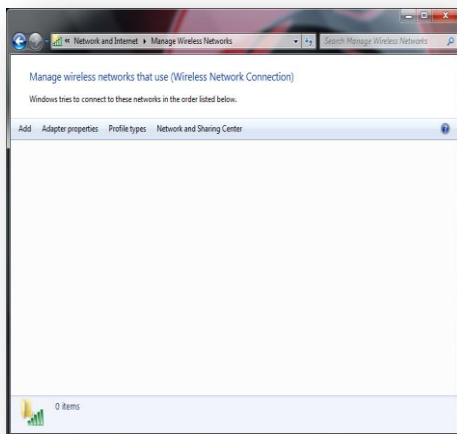


Figure 1

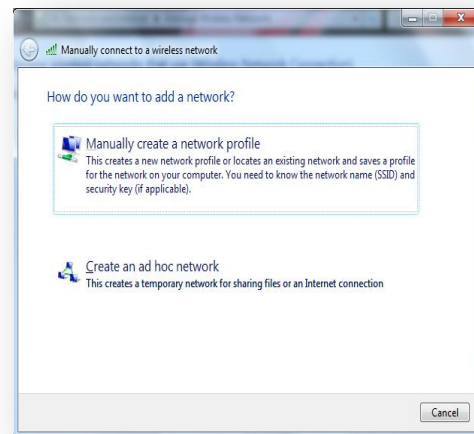


Figure 2

4. Enter the information in the following window, as in Figure 3. Network name: "**eduroam**", Security Type: "**WPA2-Enterprise**" Encryption Type: "**AES**".

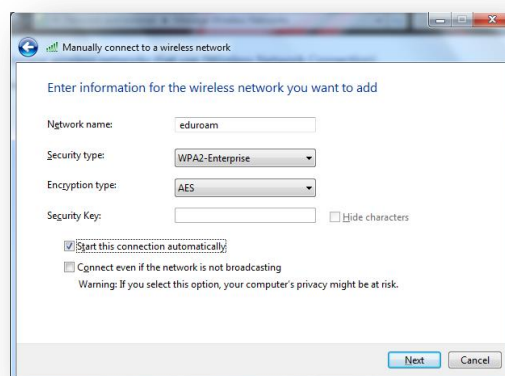


Figure 3

5. Click **[Next]** and you will be prompted with a message to say you have successfully added "eduroam". Now select the option to **[Change connection settings]**, you will be presented with a window called **[Wireless Network Properties]**. Where it says **[choose a network authentication method]** select **[Microsoft: Protected EAP (PEAP)]**

6. Click the **[Settings]** button. In the window that appears, replicate all the information as in (Figure 4) Server name: **[radius.bcu.ac.uk]** and select **[AddTrust External CA Root]** check box. Next click **[configure]** and uncheck the option for **[Automatically use my Windows Logo name and Password]** and click **[ok]**.
7. Click **[ok]** through the menus to save your settings. In the **[Manage Wireless Networks]** window you will see the eduroam network as in Figure 5.

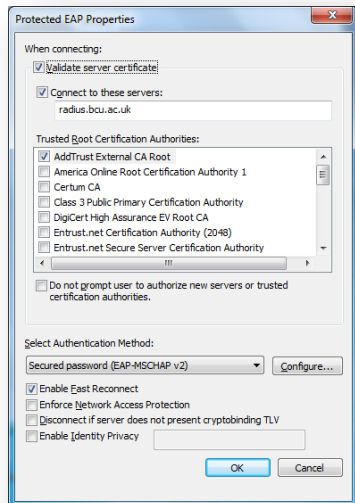


Figure 4

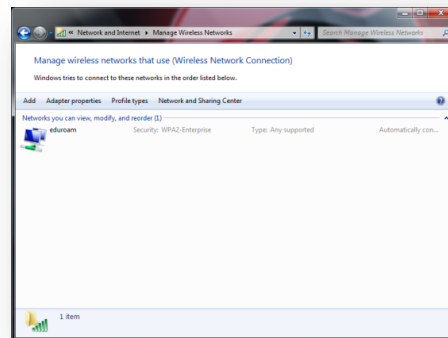


Figure 5

8. If you are within range of the "eduroam" service the network will prompt you to authenticate. Please enter your username in format (as below), followed by your normal password.

**Student User:** *firstname.lastname@mail.bcu.ac.uk*  
**Staff User:** *firstname.lastname@bcu.ac.uk*

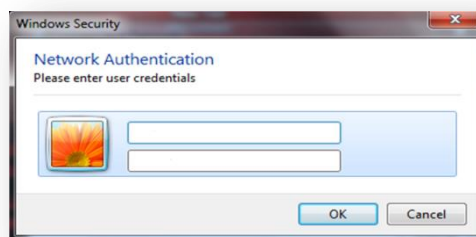


Figure 6

Users of the eduroam service must abide by Birmingham City University's Code of Conduct, and any equivalent policies at visited institutions, in addition to the Janet eduroam Policy.

It is the responsibility of the user to ensure their device is password protected to secure any saved credentials stored on the machine used for accessing eduroam. This may be in the form of a passcode on a mobile apple device for example, or windows user account equivalent.

If you are having trouble connecting to eduroam using these instructions please contact IT Help on 0121 331 6543 or [ithelp@bcu.ac.uk](mailto:ithelp@bcu.ac.uk) for further assistance.