



BIRMINGHAM CITY
University

STUDY ABROAD IN BIRMINGHAM 2018/19

#BCUabroad



CONTENTS

4	Welcome
6	Student Experiences
8	Studying in Birmingham
12	City Centre Campus
14	City South Campus
16	Schools of Art and Jewellery
18	Support
20	Students' Union
22	Accommodation
24	Arts, Design and Media
28	Business, Law and Social Sciences
32	Computing, Engineering and the Built Environment
36	Health, Education and Life Sciences
40	Entry Requirements
41	Fees
42	How to Apply

IMPORTANT LEGAL INFORMATION

Birmingham City University's Terms and Conditions are available on The Student Contract web page (www.bcu.ac.uk/student-info/student-contract) and contain the principal terms of the agreement that will apply should you accept the offer of a place to study with us. It is important that you read this document carefully.

WELCOME

Birmingham City University is located just over an hour from London in the UK's second largest city. We recently invested £260 million in our campus, allowing us to offer our students a friendly study environment with facilities that are among the best in the country.

BENEFITS OF STUDYING WITH US:

Experience the UK-style teaching and learning

Enjoy an academic experience

Enhance your career prospects

Explore Birmingham and the rest of the UK

Raise your international awareness skills

Make lifelong friends from around the world

BY COMING TO BIRMINGHAM CITY UNIVERSITY ON A STUDY ABROAD PROGRAMME, YOU'LL BE ABLE TO EMBRACE A ONCE-IN-A-LIFETIME OPPORTUNITY

We've built strong partnerships with both students and industry professionals to offer an inspirational learning environment. We've helped to enrich the lives of leading architects, designers, lawyers, engineers, healthcare professionals, musicians and many more. We offer a wide range of programmes to Study Abroad students for Year 1, 2 and 3 entry across all Faculties.

Our innovative teaching methods, ground-breaking research and industry collaborations are backed by almost 40 professional accreditations. Providing you with an education that not only works in the classroom, but in the real world for when you graduate.

You'll share your university with 24,000 students from over 80 different countries. We ensure that everyone feels right at home here in Birmingham with accommodation options for international students, a meet and greet service at Birmingham Airport and a Student Affairs team that make your move to the UK as easy as possible.

We look forward to seeing you at Birmingham City University very soon!

The Go Abroad Team
Birmingham City University

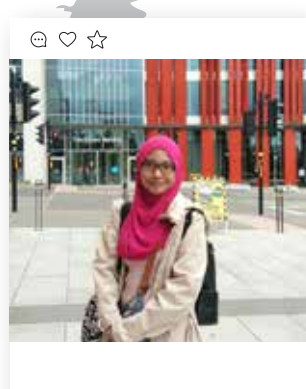


STUDENT EXPERIENCES



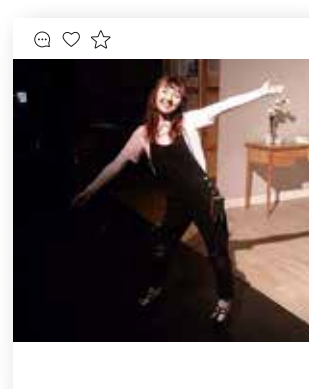
HSIAO-TING CHIANG
BA (Hons) English, Taiwan

"Birmingham is nice and welcoming, and everyone is polite. If I ask for directions, people always help. I really like shopping in the Bullring as it is very convenient to buy clothes, shoes and cosmetics. I live in Perry Barr and this is a very easy journey to the City Centre Campus – 20 minutes by bus."



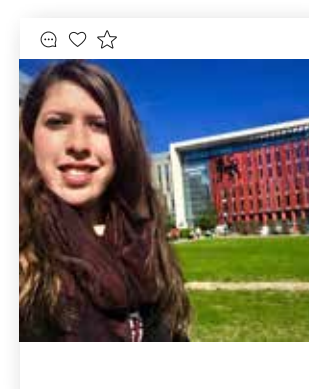
AWANG TAKONG SITI RAHIMAH
BA (Hons) English, Brunei

"Birmingham is very multicultural. People are from different backgrounds, religions and ethnicities, but we are all one. This is a very unique characteristic of a city in the UK."



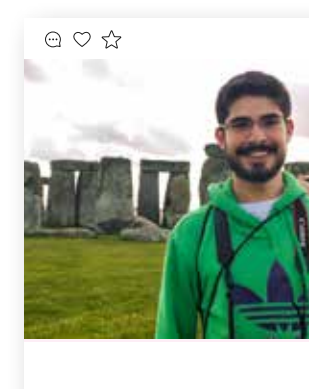
ALYSON CROW
BA (Hons) Media and Communication, Australia

"I've enjoyed spending so much time in the TV studio and having the flexibility to choose different modules. In Australia, Film and TV is a separate degree but at BCU, Media and Communication allows you to experiment with different aspects of Media as it is a broader course."



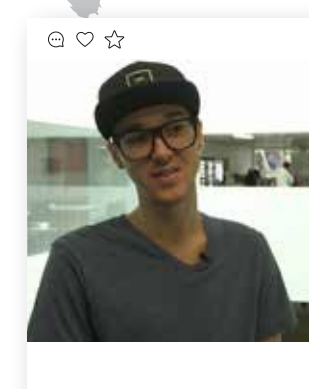
SARA ISABEL TORRES BRAVO
BA (Hons) Business and Finance, Mexico

"I feel so much more independent, more ready to find a job, and my English has improved thanks to studying here."



MAURICIO HERNANDEZ-SERRANO
BA (Hons) Visual Communication (Film and Animation), Mexico

"Here, in this one place, I have the possibility to communicate with people with whom I have absolutely nothing in common and found empathy and challenge. The fact that we're all young adds another layer of interest and complexity."



HUNTER ADAMS
BA (Hons) Marketing, USA

"I really enjoy Birmingham, it's an awesome city. The people are really really friendly, there are a lot of things to do in the city. It's in such a great location that you can pretty much travel anywhere else that you need to be, but, to be honest, there's so much to do in Birmingham that, half the time, you don't even have to do that!"



Top 10

Birmingham was selected as one of the top 10 destinations in the world to visit in 2015 by travel publisher Rough Guides.

STUDYING IN BIRMINGHAM

Birmingham is the UK's second largest city, with a population of 70,500 students. Famous for: the Bullring shopping centre, the home of Cadbury's chocolate, car manufacturing, science and industry.

AT A GLANCE



160 shops make up the iconic Bullring shopping centre



24 million visitors from around the world every year



Over 100 of our famous balti houses in the city



25 million pass through Birmingham New Street annually (businessbirmingham.com)



The most popular destination for people moving out of London (BBC, 2016)

THERE IS PLENTY TO DO IN BIRMINGHAM TO KEEP YOURSELF BUSY. IT REMAINS ONE OF ENGLAND'S MOST VISITED PLACES TO SHOP, WITH NEARLY £2 BILLION SPENT EACH YEAR*



*Visit Birmingham



RELAXING

If you want to get out and about, the city has over 8,000 acres of park and open space, making it one of the UK's greenest cities.

EATING

There are numerous cutting-edge restaurants and pubs to sample. Birmingham has over 100 balti houses together with a flourishing street food scene, centred on the popular Digbeth Dining Club.



The Mockingbird Cinema and Kitchen, Digbeth;



CULTURE

With a world-class symphony orchestra, royal ballet company and theatres, Birmingham has some of the finest contemporary arts venues in the country; one of the city's most exciting facilities is the state-of-the-art, £188 million Library of Birmingham.

Birmingham Royal Ballet in David Bintley's *Faster*; photo: Bill Cooper



SPORTS

Whether you're interested in sport as a participant or a spectator, Birmingham has plenty to offer. The city is home to three leading football clubs – Aston Villa, Birmingham City and West Bromwich Albion – and international cricket takes place at Edgbaston (pictured). The renowned Brabazon golf course at The Belfry has been the venue for several Ryder Cups, and the Barclaycard Arena hosts a range of events including Davis Cup tennis, international athletics, badminton, table tennis, judo, basketball and wrestling.



TRAVEL

Birmingham's excellent public transport system of buses, trains and a recently-extended tram network means that getting around the city couldn't be easier. We are at the centre of the UK's road, rail and coach networks, so travelling further afield is no problem, while Birmingham Airport connects directly to 140 domestic and international destinations.



BUSINESS

With over 42,000 companies, Birmingham is not just a good place to study and explore; it is also a great location to start your career, gaining real-world skills and industry contacts. Major employers are investing in the city, including world-renowned businesses such as Jaguar Land Rover, HSBC and Deutsche Bank.



NIGHTS OUT

From the mainstream bustle of Broad Street to the underground scene in Digbeth and the laid-back bars in student-friendly Selly Oak or bohemian Moseley, we've got nightlife covered. Check out iconic club nights at The Institute or The Rainbow – frequently listed in the top 100 clubs in the world and top 10 in the UK.





MUSIC

There's a host of great live music destinations to be found across the city – from sticky-floored pubs and intimate jazz bars to the famous O2 Academy and Jools Holland's Jam House. Major rock bands and artists play regularly at the Genting Arena (formerly LG Arena), which is about 10 miles from the city, and the Barclaycard Arena (formerly the NIA Birmingham) in the city centre.

SHOPPING

Birmingham is a shoppers' paradise, with modern shopping centres, restored Victorian arcades and a range of markets offering everything from designer labels to second-hand bargains. The Bullring is the city's most famous shopping destination with some 160 shops, boutiques and restaurants, now joined by the new Grand Central shopping centre above New Street station. Each year, the city plays host to the biggest German-style Christmas market outside Germany, with a range of festive food, drink and gifts.

CITY CENTRE CAMPUS

FACILITIES INCLUDE:

- Print, textiles, wood, ceramics and glass workshops
- Photography studios and darkrooms
- Four industry-standard TV studios
- Green screen MILO studio
- Radio studios and editing suites.
- Library with access to 62 million printed and online resources
- Students' Union
- Dedicated IT and student services support
- Curzon Print Centre, including Kodak self-service booth
- Ten specialist drama studios complete with acoustic panelling and sprung floors
- Noise and vibration cells
- Robotic laboratory
- Recording facilities and vintage mixing desk
- Law courts
- City Trading Room.



**WE ARE INVESTING
£260 MILLION ACROSS
OUR BUILDINGS AND
FACILITIES, TO GIVE YOU
THE VERY BEST LEARNING
ENVIRONMENT TO SHAPE
YOUR EXPERIENCE**

Our City Centre Campus is at the heart of Birmingham's fast-developing Eastside district and is just a short walk from the city centre. Most of our students on Design, Media, Acting, Engineering, Computing, Built Environment, Law, Social Sciences, Business and English programmes are based here.

The campus also features library, IT and student support facilities, together with a base for our Students' Union, incorporating the Grade II listed Eagle and Ball pub.

Our facilities are located alongside Eastside City Park, the first new urban park in Birmingham for over 130 years. This provides a superb space for relaxing in summer, as well as a great venue for events and activities.

FACILITIES INCLUDE:

- Virtual radiotherapy suite
- Radiography imaging suite
- Simulated home environment
- Replica school classrooms
- Physiology and biomedical science laboratories.

CITY SOUTH CAMPUS

Artist's impression of the new building at our City South Campus

A FURTHER £41 MILLION INVESTMENT IN OUR CITY SOUTH CAMPUS WILL SEE THE CREATION OF SPECIALIST LABORATORIES FOR OUR NEW COURSES IN SPORT AND LIFE SCIENCES, AND A NEW HOME FOR OUR EDUCATION COURSES, FROM 2018

Our health courses are taught in the £30 million Seacole Building, where state of the art facilities include a simulated operating theatre and hospital wards, a fully-equipped birthing room, a simulated home environment and a fully-functional radiography suite and 3D imaging diagnostic suite.

Students make use of virtual learning environments, such as the Virtual Case Creator for our Health students, and the School of Education and Social Work's virtual school, Green Moor Primary School.

New facilities for Sport and Life Sciences will include dedicated physiology and biomechanics laboratory, nutrition labs, sports therapy clinics and Sports Performance Centre.



Sport and Life Sciences

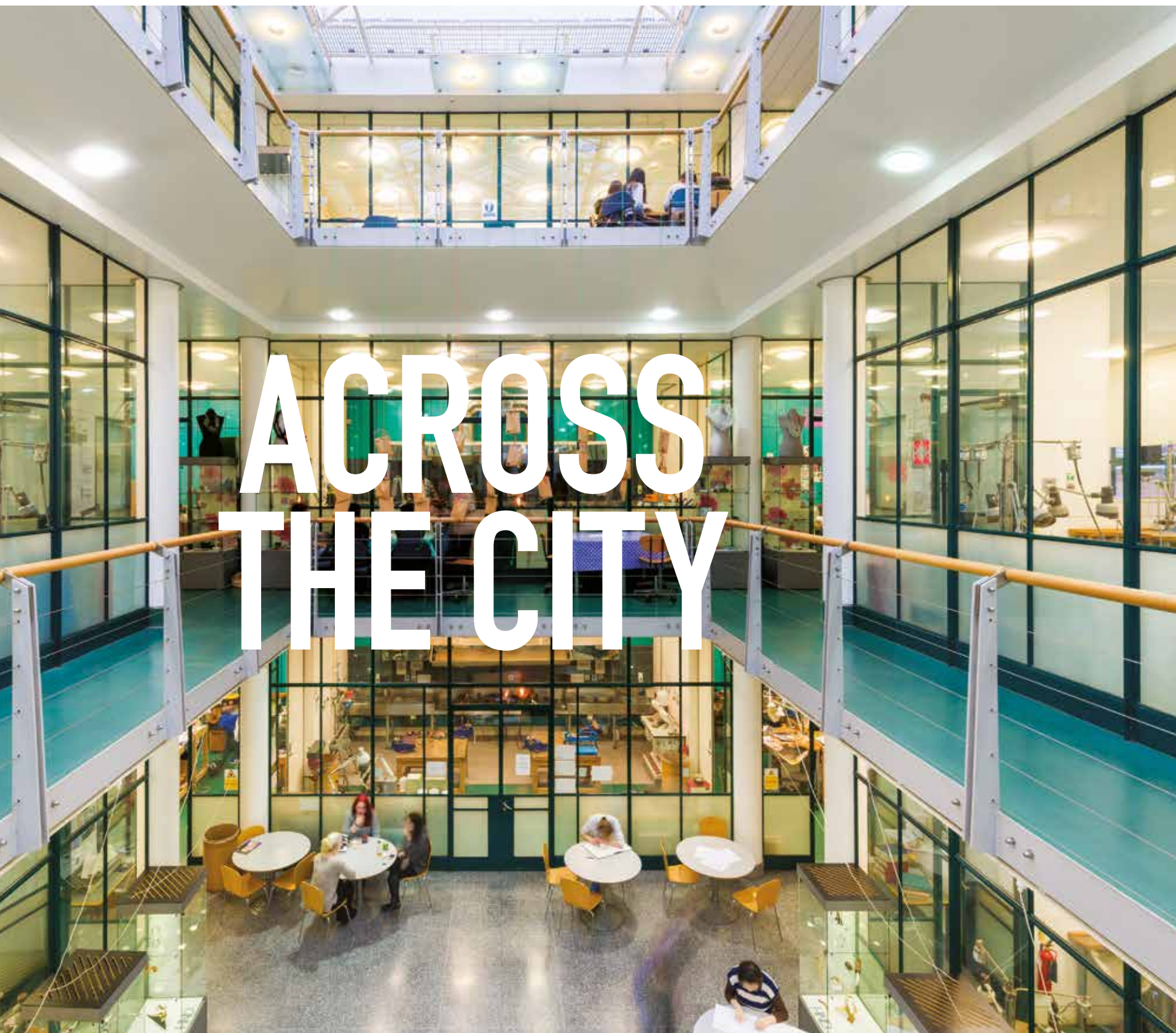
The creation of our new suite of courses in Sport and Life Sciences is yet another exciting development at Birmingham City University.

Not only have we invested £41 million in a new building to house the laboratories and teaching spaces needed, but we also plan to open up these facilities to benefit all students and the wider community.

All courses have been co-designed with employers and are endorsed or accredited by professional bodies where appropriate.

By expanding our provision to these areas, we will be helping to tackle some of the biggest challenges facing society today, such as obesity and unhealthy lifestyles, as well as supporting the UK's ambitions for success at events such as the Olympics, the Commonwealth Games and other world sporting tournaments.



School of Jewellery,
Vittoria Street

IN ADDITION TO OUR TWO MAIN CAMPUSES, OUR ART AND JEWELLERY STUDENTS BENEFIT FROM STUDYING AT SPECIALIST LOCATIONS IN THE CITY CENTRE

Both of these architectural gems have a long history and heritage of learning, and are ideally located for the sectors students on these courses may wish to work in.

Pre-entry international students are located in the peaceful and leafy surroundings of our Bournville campus, in the south of the city.

School of Jewellery Vittoria Street / Assay Office

One of the most significant jewellery schools in the world stands in a modern and spacious building right at the heart of Birmingham's famous Jewellery Quarter, where much of the jewellery made in Britain today is manufactured.

Gemmology courses are based in a purpose-built area within Birmingham's new Assay Office.

Facilities include:

- Specialist studio workshops
- Casting facility and electroplating laboratory
- Machine workshop including laser welders and laser cutters
- Exhibition space and specialist library
- Stores for materials and tools.



Birmingham School of Art Margaret Street

Floating mezzanine levels, glass lifts and cutting-edge workspaces sit comfortably beside the original stained-glass windows and mosaic floors of this glorious purpose-built art school. This Grade I listed Venetian Gothic building houses a wonderful complex of traditional-style workshops and teaching and exhibition space.

Facilities include:

- Light and airy studios
- Gallery and installation space
- Fine art library
- Woodwork, metal, plaster, fibreglass and ceramics workshops
- Digital media, print and photography workshops.

FIRST-CLASS SUPPORT

Accessing advice has never been easier. Throughout your Study Abroad experience at Birmingham City University, you will have access to our full range of support services, including careers advice, mentoring, advice on finance and academic matters, professional development events and more.

www.bcu.ac.uk/student-affairs

To make sure it is all easy to access, we have introduced a one-stop confidential student enquiry service, Ask. If you have a question about health and wellbeing, visas, your student record, the Students' Union, childcare, accommodation, IT or anything else, we are here to help.

Your studies

- Admissions
- Academic calendar
- Student ID cards and student status letters
- Complaints and appeals
- Careers and job prospects

Money matters

- Scholarships
- Personal finances
- Payments

Support services

- Healthcare
- Disability and dyslexia support
- Counselling, mental health and wellbeing
- Childcare
- Visas and immigration

Students' Union

- Support
- Representation
- Employability skills and part-time work
- Help with finding accommodation



A personalised service from our career consultants to help you plan your future career.





Welcome to BCUSU –
your Students' Union!

AT A
GLANCE



A voice
throughout
your time here



Over 200
student groups
to get involved in



A unique, Grade II
listed pub at the
City Centre Campus



Top notch
support and
advice



Hockey players in action

AS SOON AS YOU
ENROL AT BIRMINGHAM
CITY UNIVERSITY YOU
ARE AUTOMATICALLY
A MEMBER OF THE
STUDENTS' UNION,
WHICH MEANS YOU
DON'T HAVE ANY
FORMS TO COMPLETE
OR MEMBERSHIP
FEES TO PAY

- We like to consider that you're part of our family and that you will be for the entire time you study here. Being a part of the BCUSU family means you have free of charge access to all of our amazing services and facilities, including:
- Top notch support and advice from our specially trained advisers on a range of topics, including money, health, academia and housing.
 - A voice throughout your time here – we guarantee you will be listened to! – and we campaign on your behalf to make the student experience even better.
 - Over 200 student groups for you to get involved in, including sports, activities, religion, special interest and subject specific. As well as a great way to meet new people, being a member or leading a student group will look great on your CV!
 - Exciting entertainment to make your social life as fun-filled as possible – it's not all academic you know!
 - A unique, Grade II listed pub at the City Centre Campus with special prices on all our food and drinks and a special entertainment programme just for you.
 - Shops on three different campuses, offering all of those essential items you'll need.



Eagle and Ball pub
at City Centre Campus

We're run by students for students and each year we ask all our students to vote for who they want to lead BCUSU.

www.bcusu.com

A PLACE TO CALL HOME



Life

All of our halls of residence across the city offer shared kitchen and living areas, laundry facilities, free wi-fi and common rooms.



WHAT COULD BE MORE EXCITING THAN THE INDEPENDENCE AND FREEDOM OF YOUR OWN PLACE?

Living in halls is a great way to make new friends as you settle into the city.

- Over 2,000 rooms available
- A safe and secure home
- All our halls have CCTV coverage and 24-hour security patrols
- Easily accessible - close to public transport links
- Access to free wi-fi
- Shared kitchen and living areas, laundry facilities and common rooms

Please visit www.bcu.ac.uk/international/accommodation for more information on our accommodation options.

* Accommodation is subject to availability.
 * Accommodation images are representative only.
 * Some of our accommodation options are not based in the city centre and may involve a journey by public transport.

ARTS, DESIGN AND MEDIA

Housed within our City Centre Campus with cutting-edge facilities, world-renowned academics and outstanding creativity, the Faculty of Arts, Design and Media is one of the most inclusive arts educational institutions in the UK. Acting, Architecture, Art, Design, English, Fashion, Film, Games, Graphics, Illustration, Jewellery, Media, Music, Photography and Textiles – they're all here!



OUR LINKS WITH INDUSTRY INCLUDE ROLEX, SWATCH, SAATCHI AND SAATCHI, GOLDSMITH, THE BBC, THE BRITS, AXIS DESIGN ARCHITECTS LTD, SONY COMPUTER ENTERTAINMENT EUROPE, SEGA AND ROCKSTAR NORTH



ARTS, DESIGN AND MEDIA PROGRAMMES



LEVEL 4 AND 5 (Year 1 and Year 2)

September and January entry:

Birmingham School of Art

BA (Hons) Fine Art
BA (Hons) Art and Design

Birmingham School of Media

BA (Hons) English and Journalism (Joint Programme with the School of English)

School of Fashion and Textiles

BA (Hons) Costume Design And Practice
BA (Hons) Fashion Branding and Communication
BA (Hons) Fashion Business and Promotion
BA (Hons) Fashion Design
BA (Hons) Garment Technology
BA (Hons) Textile Design (Various routes available)

School of Jewellery

BA (Hons) International Jewellery Business

School of Visual Communication

BA (Hons) Design for Performance
BA (Hons) Film & Animation
BA (Hons) Graphic Communication
BA (Hons) Illustration
BA (Hons) Photography

School of English

BA (Hons) English and Drama
BA (Hons) English and Creative Writing
BA (Hons) English Language and Literature
BA (Hons) English Literature
BA (Hons) English and Journalism (Joint Programme with Birmingham School of Media)

LEVEL 5 (Year 2)

September and January entry:

Birmingham School of Media

BA (Hons) Media and Communication
(Various routes available)

LEVEL 6 (Year 3)

We have recently reviewed our curriculum across Birmingham City University. If you wish to be considered for entry to Level 6, please contact us to check availability.

You may also be able to join one of our below postgraduate programmes in the School of Fashion and Textiles. Contact us on goabroad@bcu.ac.uk for further information.

MA Cosmetics Branding and Promotion
MA Fashion Design
MA Fashion Management
MA Fashion Promotion
MA Fashion Styling
MA Garment Technology
MA Luxury Brand Management
MA Textiles and Surface Design



*All programmes are subject to availability and placement modules are unavailable for one semester students

BUSINESS, LAW AND SOCIAL SCIENCES

ACCREDITATIONS INCLUDE:

- Association of Chartered Certified Accountants (ACCA)
- Chartered Institute of Management Accountants (CIMA)
- Chartered Institute of Personnel and Development (CIPD)
- Chartered Management Institute (CMI)
- Chartered Institute of Marketing (CIM)
- Chartered Institute of Internal Auditors (IIA)
- The British Psychological Society (BPS)
- Solicitors Regulation Authority and Bar Standards Board



THE FACULTY OF BUSINESS, LAW AND SOCIAL SCIENCES OFFERS AN INNOVATIVE LEARNING ENVIRONMENT AS WELL AS OUTSTANDING FACILITIES AND RESOURCES.

At Birmingham City Business School, everything starts with business. We have a unique relationship with the extraordinary city we're rooted in, renowned for its entrepreneurial and commercial past, present and future. We provide you with the building blocks for a successful career, by developing your skills for life as well as work.

At Birmingham City School of Law, we believe that a balanced view makes better legal professionals. That's why we don't just focus on professional practice, but actively break down barriers to social justice and human rights throughout the world.

Birmingham City University's School of Social Sciences has a mission to make sense of the world. Our students and academics work together across disciplines to develop insights into society. We're focused on everything from understanding crime and punishment to the study of all aspects of psychology and the exploration of social structures and change.

BUSINESS, LAW AND SOCIAL SCIENCES PROGRAMMES



LEVEL 4 AND 5 (Year 1 and Year 2)

September and January entry:

Birmingham City Business School
BSc (Hons) Accountancy
BSc (Hons) Accounting and Finance
BA (Hons) Business (Various routes available)
BA (Hons) Business and Management
BA (Hons) Business Economics
BSc (Hons) Business Finance
BA (Hons) Business Management (Various routes available)
BA (Hons) Economics
BA (Hons) Event, Venue and Experience Management
BSc (Hons) Finance and Investment
BA (Hons) Financial Economics
BA (Hons) Human Resource Management
BA (Hons) Marketing (Various routes available)

School of Law
LLB (Hons) Law
LLB (Hons) Law with American Legal Studies
LLB (Hons) Law with Business
LLB (Hons) Law with Criminology

School of Social Sciences
BA (Hons) Black Studies
BA (Hons) Criminology
BA (Hons) Criminology and Security Studies
BA (Hons) Criminology, Policing and Investigation
BSc (Hons) Psychology
BSc (Hons) Psychology with Business
BSc (Hons) Psychology with Criminology
BSc (Hons) Psychology with Marketing
BSc (Hons) Psychology with Sociology
BA (Hons) Sociology
BA (Hons) Sociology and Criminology

LEVEL 6 (Year 3)

We have recently reviewed our curriculum across Birmingham City University. If you wish to be considered for entry to Level 6, please contact us to check availability.



VISITING MASTERS PROGRAMME

Starting in January 2019, our Visiting Master's Programme is a 4 week study experience programme for postgraduate students from our partner universities.

This is a non-credit bearing programme. However, upon successful completion, you will be awarded with a certificate of attendance. You will also receive a feedback form, summarising your performance at Birmingham City University.

- Law pathway
- Business pathway

*Minimum number of 15 students required per programme

*All programmes are subject to availability and placement modules are unavailable for one semester students

COMPUTING, ENGINEERING AND THE BUILT ENVIRONMENT

WE WORK WITH SOME
OF THE WORLD'S
FOREMOST EMPLOYERS,
INCLUDING THE BBC,
MICROSOFT, CISCO,
JAGUAR LAND ROVER
AND WILMOTT DIXON



The Faculty of Computing, Engineering and the Built Environment comprises two schools with a shared vision to create a powerful centre of technological excellence and innovation, and to equip you with the skills you need to succeed in the workplace and contribute to the wider society.

We have excellent resources including state-of-the-art laboratories and engineering workshops, world-class film and television studios, and the latest computing and digital technologies, all located in a spectacular environment provided by the Millennium Point building.

Our courses are designed to develop highly employable graduates and we have worked closely with our employer network to ensure our courses meet their demands and expectations. We work with some of the world's foremost employers, including the BBC, Microsoft, Cisco, Jaguar Land Rover and Wilmott Dixon.

OUR ACCREDITATIONS INCLUDE:

**The Chartered Institute
of Building (CIOB)**

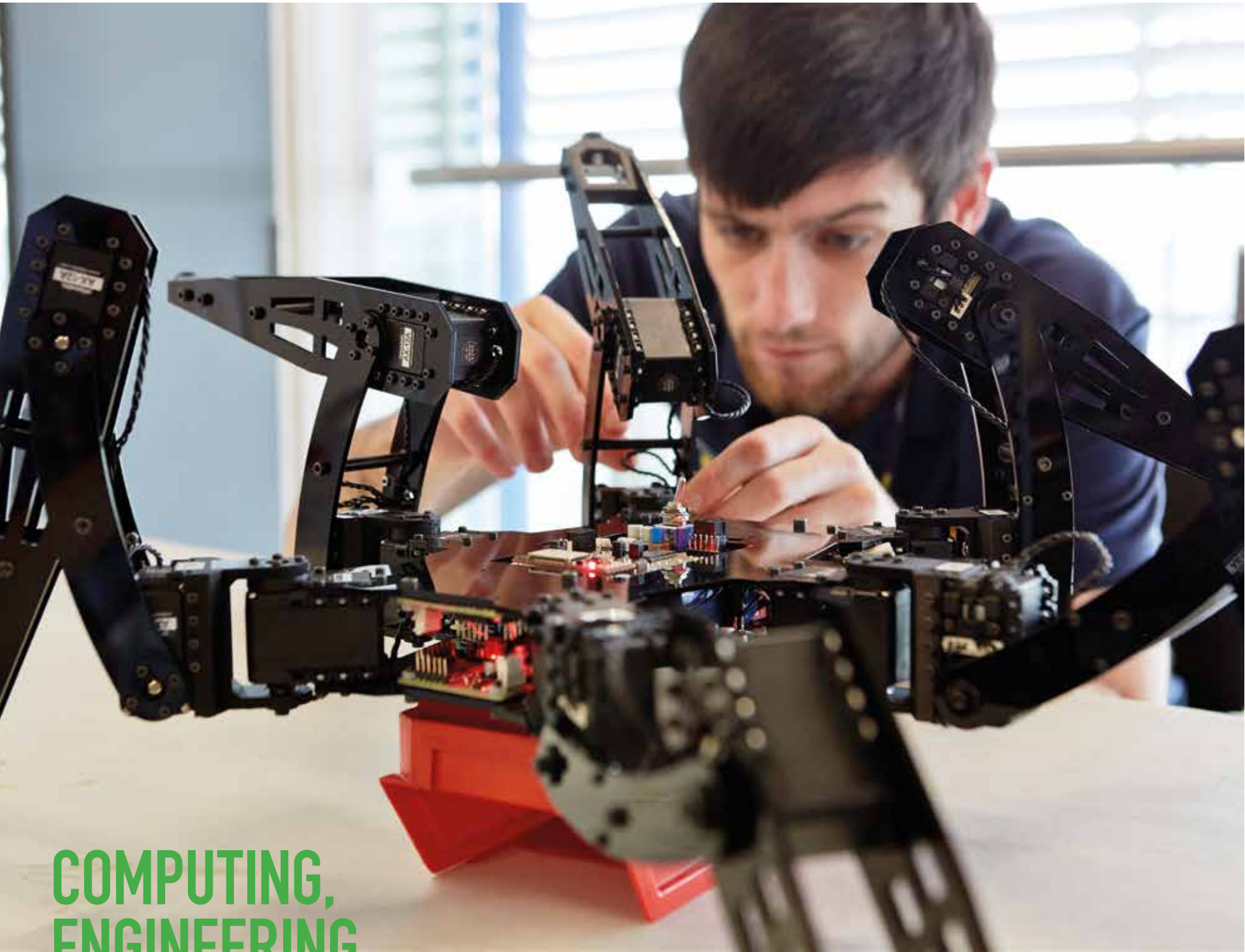
**Royal Institution of Chartered
Surveyors (RICS)**

**Royal Town Planning
Institute (RTPI)**

**Association of Project
Managers (APM)**

**The Institution of Engineering
and Technology (IET)**

**The Institute of Mechanical
Engineering (IMechE)**



COMPUTING,
ENGINEERING
AND THE BUILT
ENVIRONMENT
PROGRAMMES



LEVEL 4 AND 5
(Year 1 and Year 2)

September and January entry:

School of Computing and Digital Technology

- BSc (Hons) Architectural Technology
- BSc (Hons) Business Information Systems
- BSc (Hons) Computing and Information Technology
- BSc (Hons) Computer Games Technology
- BSc (Hons) Computer Networks
- BSc (Hons) Computer Networks and Security
- BSc (Hons) Computer Science
- BSc (Hons) Digital Media Computing
- BEng (Hons) Electronic Engineering (Various routes available)
- BSc (Hons) Film Production Technology
- BSc (Hons) Film Technology and Visual Effects
- BSc (Hons) Forensic Computing
- BSc (Hons) Music Technology
- BSc (Hons) Sound Engineering and Production

School of Engineering and the Built Environment

- BEng (Hons)/MEng Automotive Engineering
- BSc (Hons) Broadcast and Communications Engineering
- BSc (Hons) Building Surveying
- BEng (Hons) Civil Engineering
- BSc (Hons) Construction Management
- BEng (Hons)/MEng Mechanical Engineering
- BSc (Hons) Quantity Surveying
- BSc (Hons) Real Estate

LEVEL 6
(Year 3)

We have recently reviewed our curriculum across Birmingham City University. If you wish to be considered for entry to Level 6, please contact us to check availability.

*All programmes are subject to availability and placement modules are unavailable for one semester students



HEALTH, EDUCATION AND LIFE SCIENCES

THE FACULTY OF HEALTH,
EDUCATION AND LIFE SCIENCES
ASPIRES TO BE ONE OF THE
MOST DIVERSE PROVIDERS OF
PUBLIC HEALTH EDUCATION IN
THE COUNTRY



The Faculty of Health, Education and Life Sciences has a national and growing international reputation for pioneering approaches to learning and teaching, through the creation of cutting edge simulated experiences and has consistently achieved "excellent" ratings in national quality audits.

Our Faculty of Health, Education and Life Sciences has been awarded the Skills for Health Quality Mark, in recognition of the high standard of learning and training delivered to the health sector (2016-18). We have also been awarded British Dyslexia Association (BDA) Quality Mark for our health courses in recognition of our support for students with dyslexia – the first such award in the country for a University.

We have what you need to make your studies at Birmingham City University a success. Our Skills Practice and Care Enhancement (SPACE) area gives Health students a safe and supportive environment to practise over 60 clinical skills procedures outside of lecture time.

Three members of staff in our Faculty have even attained the title of 'Queen's Nurse', which recognises a high level of commitment to patient care and community nursing practice.

We train more teachers than any other university in the West Midlands and enjoy strong partnerships with over 1,000 schools, colleges and training organisations across the region. We are the West and East Midlands training provider for the charity Teach First, which provides future leaders for schools in low income communities. We are the region's largest provider of qualified health and social care professionals to the NHS and we have the UK's only contract to train and educate the Armed Forces' adult nurses, radiographers and operating department practitioners.

HEALTH, EDUCATION AND LIFE SCIENCES PROGRAMMES



LEVEL 4 AND 5 (Year 1 and Year 2)

September entry:

School of Health:

- BEng (Hons) Biomedical Engineering
- BSc (Hons) Biomedical Sciences
- BSc (Hons) Health Studies (Public Health)
- BSc (Hons) Physical Education and School Sport
- BSc (Hons) Sports and Exercise Nutrition
- BSc (Hons) Sport and Exercise Science
- BSc (Hons) Sports Therapy

School of Education and Social Work:

- BA (Hons) Education Studies
- BA (Hons) Primary Education with QTS*
- *Taught modules without the school work experience
- BA (Hons) Working with Children Young People and Families

LEVEL 4 AND 5 (Year 1 and Year 2)

January entry:

School of Health:

- BEng (Hons) Biomedical Engineering
- BSc (Hons) Biomedical Sciences
- BSc (Hons) Health Studies (Public Health)*
- * Taught modules without the work experience
- BSc (Hons) Physical Education and School Sport
- BSc (Hons) Sports and Exercise Nutrition
- BSc (Hons) Sport and Exercise Science
- BSc (Hons) Sports Therapy

School of Education and Social Work

- BA (Hons) Education Studies
- BA (Hons) Working with Children Young People and Families

LEVEL 6 (Year 3)

September entry:

School of Health:

- BSc (Hons) Public Health

We have recently reviewed our curriculum across Birmingham City University. If you wish to be considered for entry to other Level 6 programmes, please contact us to check availability.

*All programmes are subject to availability and placement modules are unavailable for one semester students



ENTRY REQUIREMENTS FEES

Some programmes may have higher entry requirements, but you can expect to require an overall average of a 2:2. If you'd like to know how that translates into your home qualification, please get in touch.

English language requirements*

To be successful while studying at Birmingham City University, you'll need to have a good level of English.

If IELTS isn't your main English language qualification provider, we also accept a range of other qualifications as evidence of your English language abilities. Please visit our website to find out if we accept your local qualification.
www.bcu.ac.uk/english-tests

If you have a lower score, you may be eligible for a pre-session English programme prior to commencing your main Study Abroad programme.

One semester (credit bearing)

IELTS 6.0 with no less than 5.5 in any one language skill or equivalent.

One semester (non-credit bearing)

IELTS 5.5 overall or equivalent.

Two semesters (credit bearing):

IELTS 6.0 with no less than 5.5 in any one language skill or equivalent.

If you come to Birmingham City University on a Study Abroad programme, the fee will include tuition, examination costs and membership of the Students' Union. Please see further details below.

Programme	Costs
Study Abroad for One Semester:	£6,000
Study Abroad for Two Semesters:	£12,000
Visiting Masters Programme:	£2,400

Students from our partner institutions who participate in an exchange programme may have their tuition fee waived. Please contact your home university for further details.



*Please note that some programmes may have a higher English language requirement. If applicable, this will be stated on your offer letter.

HOW TO APPLY



DISCOVER MORE AND DOWNLOAD
THE APPLICATION FORM FROM OUR
WEBSITE:
[BCU.AC.UK/STUDY-ABROAD](http://bcu.ac.uk/study-abroad)

IT'S AS
EASY AS
1, 2, 3...



STEP 1:
Find your
programme



STEP 2:
Complete our
online application
form



STEP 3:
Submit your completed
application form with the
required documents to
goabroad@bcu.ac.uk



**DEADLINE TO
APPLY FOR
SEPTEMBER 2018**



**DEADLINE TO
APPLY FOR
JANUARY 2019**



T: +44 (0) 121 331 5389
E: goabroad@bcu.ac.uk
W: bcu.ac.uk/study-abroad
#bcuabroad

Go Abroad Team
International Office
University House
15 Bartholomew Row
Birmingham
B5 5JU
United Kingdom